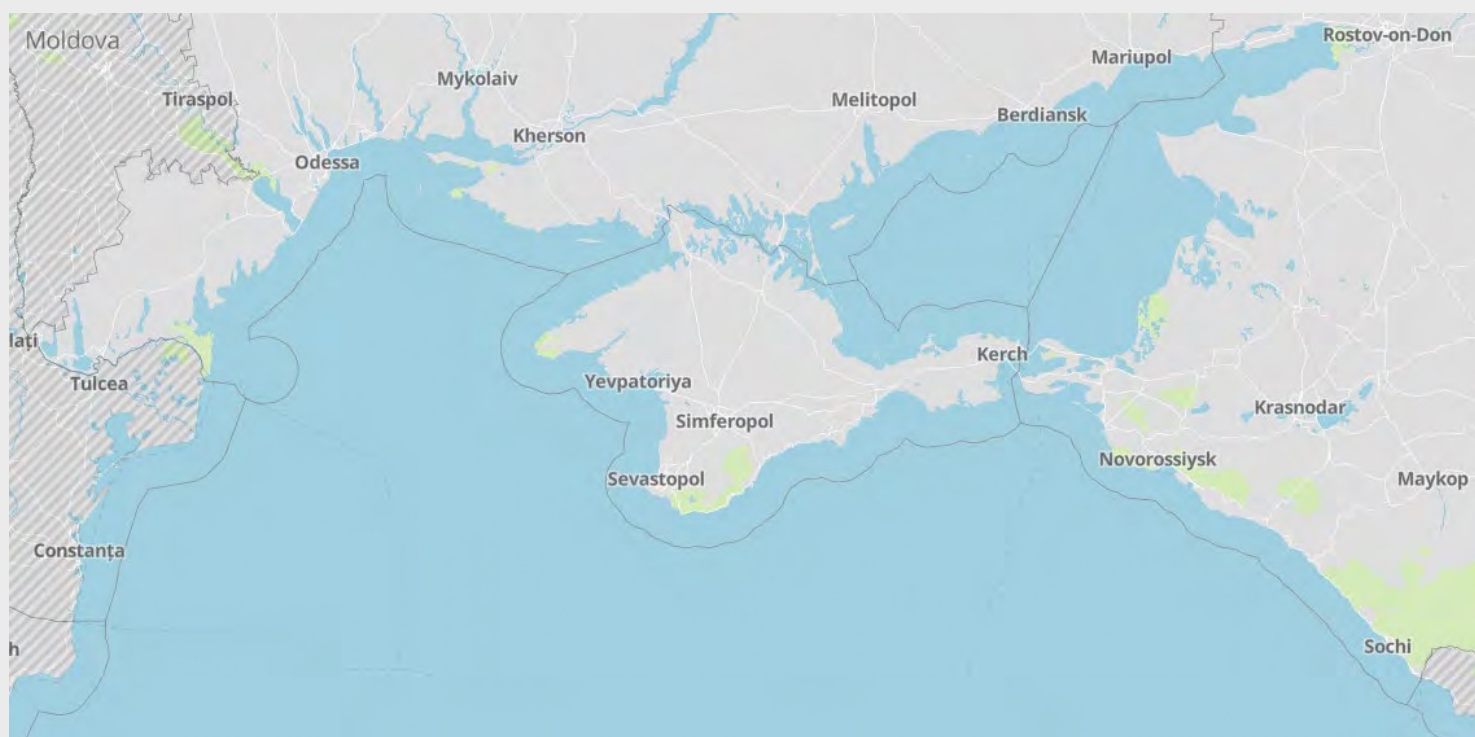


Northern Black Sea and Russia Ports Threat Assessment

Port operations and security overview

Date and time of latest intelligence included in this report: 06 March 2025 – 09:00 UTC



RiskIntelligence

Risk Intelligence A/S
Strandvejen 100
2900 Hellerup
Denmark

Tel: +45 7026 6230
riskintelligence.eu

Overview of current situation

Brief update:

Developments during the reporting period do not represent a change in the threat landscape of the Black Sea. The ports table details the operational and security conditions in the ports.

Attacks on Russian and Ukrainian infrastructure have continued, during the past week, including attacks on Odesa on 01 March where two vessels, the MSC LEVANTE F and the SUPER SARKAS were impacted by the attacks. Unsubstantiated claims by Russia included that the MSC LEVANTE F was transporting military equipment to Ukraine. It is therefore likely that the MSC LEVANTE F was intentionally targeted, however, the intention is unconfirmed. The damage to the SUPER SARKAS is likely to be collateral rather than intended. Nevertheless, the incidents do not change the threat picture as similar previous incidents involving vessels have also included similar unsubstantiated claims and similar precision missiles – indicating that Russian forces were likely intending a specific target with the attack. Although there is no specific indication of why the MSC LEVANTE F was targeted, it is therefore likely merely to prove that the Russian forces still have the capability to conduct such attacks and to put further pressure on the Ukrainian defence capabilities while the country is also seeing increased pressure from the US to agree to future negotiations, cease-fire or similar.

The future impact of Russian attacks remains linked to Ukraine's air-defence capacities. Future targeted attacks towards vessels cannot be ruled out, but the threat of collateral damage as part of attacks towards Ukrainian port infrastructure remain the most likely. Future similar attacks can disrupt maritime operations, including port operations.

Political and diplomatic activities continued during the past week, with increased intensity following the recent calamitous meeting between US and Ukraine, which has subsequently led to the US pausing military aid to Ukraine. However, it remains to be seen what impact the fallout of the pause of US military aid to Ukraine will have, including what

other countries might be able to provide in additional support. The future US involvement in Ukraine is currently uncertain including the potential influence it might have on any future cease-fire or actual peace negotiations. It is likely that the US is currently trying to pressure concessions from Ukraine as part of preparations for potential future talks, however, the timeline for a ceasefire in Ukraine is still uncertain.

The likely scenarios for vessel attacks are:

Scenario 1: Vessels can be targeted due to flawed intelligence from the Russian military, suggesting they carry military hardware.

Scenario 2: Attacks may be aimed at deterring vessels from using the Ukrainian transit corridor and disrupting maritime exports by creating uncertainty and danger.

Scenario 3: Russia could target vessels to increase pressure on Ukraine to influence future negotiations.

Regardless of Russian objectives, Ukrainian ports and their infrastructure remain likely targets. The threat of collateral damage to vessels in port and those transiting the corridor is high due to Russia's apparent willingness to target cargo vessels and port infrastructure near civilian areas.

Ukrainian Black Sea Corridor:

Vessels continue navigating the corridor to Ukrainian Black Sea ports, during the past week. The threat level for vessels in transit is assessed as lower than the likelihood of collateral damage in port, given the continued focus of Russian attacks on Ukrainian port cities and port infrastructure and future incidents involving commercial vessels—whether from collateral damage, debris, missile misidentification, or potential direct targeting—cannot be ruled out.

The Ukrainian Black Sea corridor and ports operate under IMO Circular Letter 4748 and local guidance, though operational differences should be expected.

Operational disruptions such as power outages and air raid alarms are likely until security improves. An elevated threat to maritime trade in the NW Black Sea and near the conflict area persists due to likely Russian actions against vessels and port infrastructure.

Black Sea:

Reported war-related developments do not change the threat perception for the Black Sea region, with the north-western area still an active war zone.

The security situation varies within the Black Sea, with lower threats to maritime operations in the southern half. Potential harassment, AIS/GPS signal jamming or spoofing, and the use of warning shots remain possible. Ukrainian forces are expected to continue pressuring Russian forces in the Black Sea, including Crimea, in order to achieve greater control over the maritime domain to secure future shipping corridors to Ukrainian ports. Russia, despite reduced naval capabilities in the Black Sea and the Sea of Azov, maintains a presence that can deploy mines or munitions into the Black Sea. Submarine deployment will be influenced by Ukrainian anti-ship capabilities. However, under current conditions, Russia is unlikely to enforce any blockade or inspection regime in the north-western Black Sea.

The threat of sea mines persists in the wider Black Sea, with ongoing Mine Countermeasure (MCM) operations conducted by Romania, Bulgaria, Turkey, and Ukraine.

Reports of Russian and Ukrainian military activity includes operations in the Black Sea, underlining the continued threats posed to shipping in the area. War-related implications, such as varying degrees of naval presence, congestion at regional straits and ports, sanctions on trade to and from Russia, and complications with crew changes, have become more common since Russia's withdrawal from the UN-backed Black Sea Grain Initiative in July 2023.

Sea of Azov:

The Sea of Azov is largely restricted for commercial traffic without Russian consent. Mariupol and Berdyansk ports, controlled by

Russian forces, have unclear operational statuses. Reports indicate stolen Ukrainian cargo is being transported from these ports. Ukraine monitors vessels to occupied ports in the Sea of Azov and may consider them potential military targets. Russia has increased defences around the Crimea bridge due to Ukrainian strikes. Non-Russian-flagged vessels face disruptions in the Kerch Strait, and Russia may prohibit vessels loaded outside its territory from transiting. Attacks on Russian Black Sea ports operating at ISPS level 2 are probable.

Ukraine:

Power-outages and air-raid alarms continue throughout the country, as a result of Russian attacks, which can also disrupt port operations. Concerns regarding the operational future of the country's energy network, including sufficient supplies and making the network more resilient to aerial attacks, continue to be expressed. Given the constant unpredictability, future disruption should be expected.

The reported Ukrainian incursion into Russia continues and is generally considered part of a wider strategy to establish some possible Ukrainian bargaining chip in future negotiations with Russia. It remains likely that Russia may use any pretext for future attacks on Black Sea maritime operations, if deemed useful to achieve their military or political objectives.

Martial law remains in place – with some local night-time curfews in place. All Ukrainian ports are operating at ISPS level 3 following the communication to the IMO by the Ukrainian authorities.

Russia:

Port information is located in the port table.

Ukraine is likely still planning strikes on Russian military targets like Novorossiysk Naval base, naval vessels, as well as targeting energy infrastructure and other port facilities related to energy exports. Ukraine is unlikely to directly target civilian infrastructure or vessel traffic, but collateral damage in form of missile debris or similar is possible.

It is possible that the cancelling of US intelligence support will limit Ukrainian strikes in the future, as well as a cancelling of the Starlink connection for the Ukrainian military will likely limit the range of Ukrainian drones.

Overall, a Ukrainian attack against Russian maritime targets, predominately in Crimea, near Kerch and in the Eastern Black Sea remain a possibility.

Videos of naval and aerial drone attacks in Russian ports also highlights a general lack of advanced counter measures. Russian anti-air is often fired at near horizontal angles. Therefore, a lot of anti-air fire is going directly into civilian and port areas, across from wherever Russian Naval vessels are positioned. This is likely to lead to damage to port facilities and vessels and may potentially also wound or kill sailors or port workers.

When using other Russian ports than those in the Black Sea, for example Arctic or Baltic Sea ports, it is possible that Russian authorities will try to recruit or coerce crews on visiting vessels with non-Russian flag or crew, to conduct sabotage of undersea cables by releasing the anchor and dragging it across cables or pipelines. Such cases of recruitment have not been confirmed, but it is possible given the ongoing Russian effort to conduct sabotage of undersea cables in the Baltic Sea, and the requirement for plausible deniability.

Conflict outlook:

The diplomatic and political statements and activities intensified during the past week, following the calamitous meeting between US President Trump and UKR President Zelenskyy, which exposed the ongoing differences in objectives and desired outcomes for the parties involved. This is likely to continue given that the differences in opinions and objectives on what outcomes can or should be agreed to, remain unlikely to be resolved in the near-term.

Developments along the frontline do not change the threat assessment in the northwestern Black Sea. Ukraine and Russia are likely to continue their positioning ahead of any future negotiations, with both capable of continuing the conflict at present levels without significant escalation.

To the degree that it is possible, given the announced pause in US military aid to Ukraine, Ukraine is likely to continue targeting Russian infrastructure using missiles, naval drones, and aerial drones, focusing on Crimea, the Eastern Black Sea, and the Sea of Azov. Russia continues to have the capability to disrupt vessels in the Ukrainian Black Sea corridor and to target port infrastructure in attempts to divert and disrupt Ukrainian military efforts. New sanctions on Russia could alter Black Sea security dynamics, with potential restrictions on EU, NATO, or Western-affiliated vessels accessing Russian ports. Detention and harassment of such vessels by Russian authorities are possible.

The war has shown potential for broader hybrid warfare, with Western intelligence warning of increased Russian activities in Europe. Ukraine are also likely to continue to target Russian infrastructure beyond the Black Sea. Examples include "parcel bombs" at DHL sites and incidents involving Nord Stream pipelines, suggesting hybrid warfare extending beyond Ukraine and the Black Sea to areas with high tensions between Russia and the West or NATO.

Annex 1 – Illustration of reported mined areas

Annex 2 – Announced temporary corridor from UKR Black Sea ports

Annex 3 – Reported Kerch Strait inspection area

Annex 4 – List of commercial vessel incidents

Annex 5 – Incidents

Ukraine and northern Black Sea ports

Refer to the following page for definitions and information on sanctions/commercial restrictions

Port	Current port situation	Current local situation	Operations	Security
Odessa	The port is understood operational in accordance with the IMO Circular Letter 4748, and local guidance.	Russian strikes do occur against targets in the Odesa Oblast, including some direct targeting of Odesa city and port facilities. The overall security situation remains highly unpredictable and local operational differences and issues should be expected. Disruptions to operations may occur due to power outages or air raid alarms.		
Pivdenny	The port is understood operational in accordance with the IMO Circular Letter 4748, and local guidance.	Russian strikes have occurred against targets in and near Pivdenny, including targeting of the port. Future targeting in the area as part of military operations cannot be ruled out. The overall security situation remains highly unpredictable and local operational differences and issues should be expected. Disruptions to operations may occur due to power outages or air raid alarms.		
Mykolaiv	Closed. Cargo operations suspended for commercial operations.	In control of Ukrainian forces. Russian strikes against military targets and critical-infrastructure targets in or near the city do occur.		
Mariupol	Disputed operational status.	Controlled by Russian forces and part of annexed territory. Actual operational status is disputed with Russian authorities reporting the port to be open, although this is with very limited traffic prioritized by the Russian state. Reports indicate the rebuilding of the port facilities by Russian military and contractors.		
Chornomorsk	The port is understood operational in accordance with the IMO Circular Letter 4748, and local guidance.	Russian strikes have occurred against targets in the Odessa Oblast. Future attacks targeting Chornomorsk port cannot be ruled out. The overall security situation remains highly unpredictable and local operational differences and issues should be expected. Disruptions to operations may occur due to power outages or air raid alarms.		
Ukraine Danube ports	Ukraine Danube ports are operating and handling ship calls via the Danube, and the Sulina and Bystre Canals.	Incidents involving mines have previously occurred in the Black Sea near the canals. Russian strikes against the ports in the Izmail region, do occur. Local weather conditions, water levels, and pilot shortages also impact maritime operations. ISPS Level 3 is in place, as communicated by the Ukrainian authorities. Delays and congestion have been reported in relation to port and canal operations.		

Port	Current port situation	Current local situation	Operations	Security
Kerch Strait	Open for navigation but only for authorized transit. Ports located within the Strait are reported to be operating. Inspection regime and additional security measures are in place.	UKR naval drone or missile strikes against the Kerch Strait Bridge and nearby naval stations and critical infrastructure are expected. Attacks are not expected to directly target commercial maritime traffic, but collateral damage cannot be ruled out. Russian defensive fire against drones may hit commercial traffic. Russia has announced transit restriction of vessels which are not loaded in Russian ports. Scrutiny against crew is possible *. See Annex 3 for reported Kerch Strait inspection area.		
Russian Black Sea ports	Open with restrictions. Additional security measures are in place.	Ports operating at ISPS level 2, some operational delays possible. Ukrainian attacks against naval or state-affiliated vessels, and port infrastructure, using naval drones, aerial drones, or cruise missiles, is possible. Collateral damage from drones may occur in case of incidents, and Russian defensive fire against drones may hit commercial traffic. Scrutiny against crew is possible *.		
Russian Sea of Azov ports	Open with restrictions. Sea of Azov is currently closed to unauthorized navigation by the Russian authorities. Additional security measures are in place.	Ports operating at ISPS level 2, some operational delays possible. Ukrainian attacks against naval or state-affiliated vessels, and port infrastructure, using naval drones, aerial drones or cruise missiles, is possible. Collateral damage from drones may occur in case of incidents, and Russian defensive fire against drones may hit commercial traffic. Scrutiny against crew is possible *.		
Temporary corridor from UKR Black Sea ports	Operational status is reported to be open, in accordance with IMO Circular Letter 4748 – though likely influenced by local operational circumstances in the NW Black Sea.	The corridor is reported to be running without considerable issues, although disruption following attacks are to be expected. Any tacit agreement from Russia on current transits are unknown, and further Russian acceptance is unclear if the increased tempo of Ukrainian strikes on Russian assets in the Black Sea continues. Military activity in and near the corridor is possible, collateral damage to vessels is possible.		
Constanta	Open.	Operating, with additional cargo diverted to Constanta due to closed Ukrainian ports. Congestion should be expected, and although this is being managed, it could lead to delays.		

* Constraints and demands related to vessels with Ukrainian crewmembers. Russian crew with previous military service may be questioned by authorities withheld as part of Russian mobilization efforts. ** Risk Intelligence is not responsible for third-party content.

Operations and Security definitions

Operations:

Green – Operations in the area are ongoing normally with no significant issues.

Yellow – Some delays or disruptions in the area may be expected, which could be due to limitations to, for example, port operations and/or congestion in the area, or other difficulties with access or operating at the required ISPS level or complying with other procedures either at port or offshore.

Red – Operations have been significantly disrupted and ports or areas might be closed or only partially operating due to restrictions, blockades, lack of functioning infrastructure, personnel disruptions, and access concerns, or other issues preventing all or most operations.

Security:

Green – The area is secure and there are no direct or indirect security threats in the port vicinity or offshore area. Low threat to vessels/personnel.

Yellow – There are no direct security threats but there are possible indirect threats in the vicinity, particularly but not limited to conflict taking place in proximity either on land or offshore. Moderate threat to vessels/personnel.

Red – Direct threats are possible to the port or area and/or its immediate approaches, including collateral damage in the immediate area or direct attacks that could target infrastructure and vessels at berth/anchorages/underway. High threat to vessels/personnel.

Note on sanctions and commercial restrictions

Sanctions and commercial restrictions are being imposed on Russia in response to its invasion. These sanctions are evolving and will affect ongoing business operations in many complex legal ways. Sanctions are being applied to individual Russians, business entities, and to certain Russian export products (such as oil products). There are also restrictions on specific nationalities (such as US citizens) engaging in certain activities, restrictions on payments (in certain currencies and through certain institutions), and restrictions on Russia's import of particular dual-use items and technologies. Port entry bans for Russian vessels are being implemented (in the UK, for example).

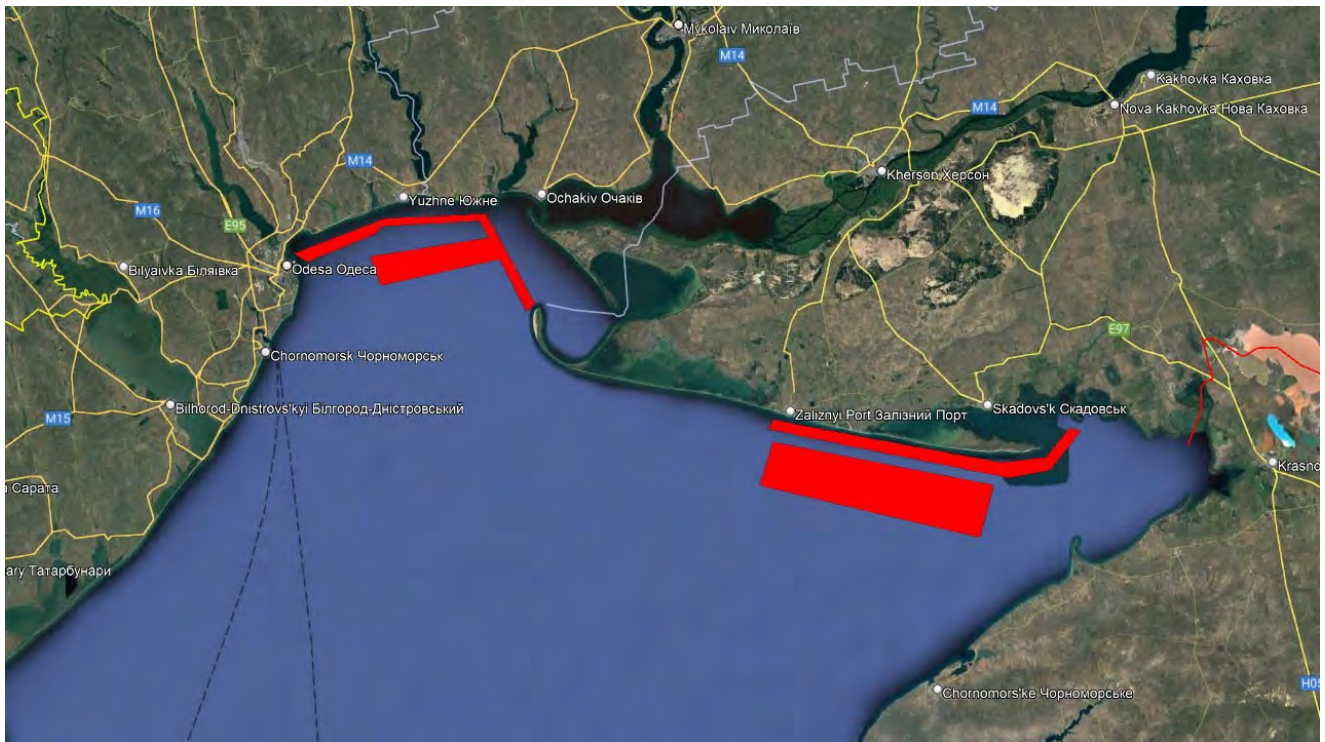
The fine print of sanctions and restrictions might affect chartering arrangements in unexpected ways, depending on the connection to Russia. These issues, as well as insurance issues for operating in war risk areas, are not covered in this report and might need to be assessed separately to reduce the risk of exposure.

Advice given and recommendations made do not constitute a warranty of future results by Risk Intelligence or an assurance against risk. Recommendations made are based on information available at the time of writing. No express or implied warranty is given in respect of any judgment made or to changes or any unforeseen escalation of any factors affecting any such judgement.

Documents are for the benefit of the recipient only and may not be disclosed to any third parties without the prior written consent of Risk Intelligence; such consent not to be withheld unreasonably. The recipient agrees to indemnify Risk Intelligence against any claims and any resulting damages that may be caused by any unauthorised disclosure of such documents.

Annex 1:

Reported mined areas



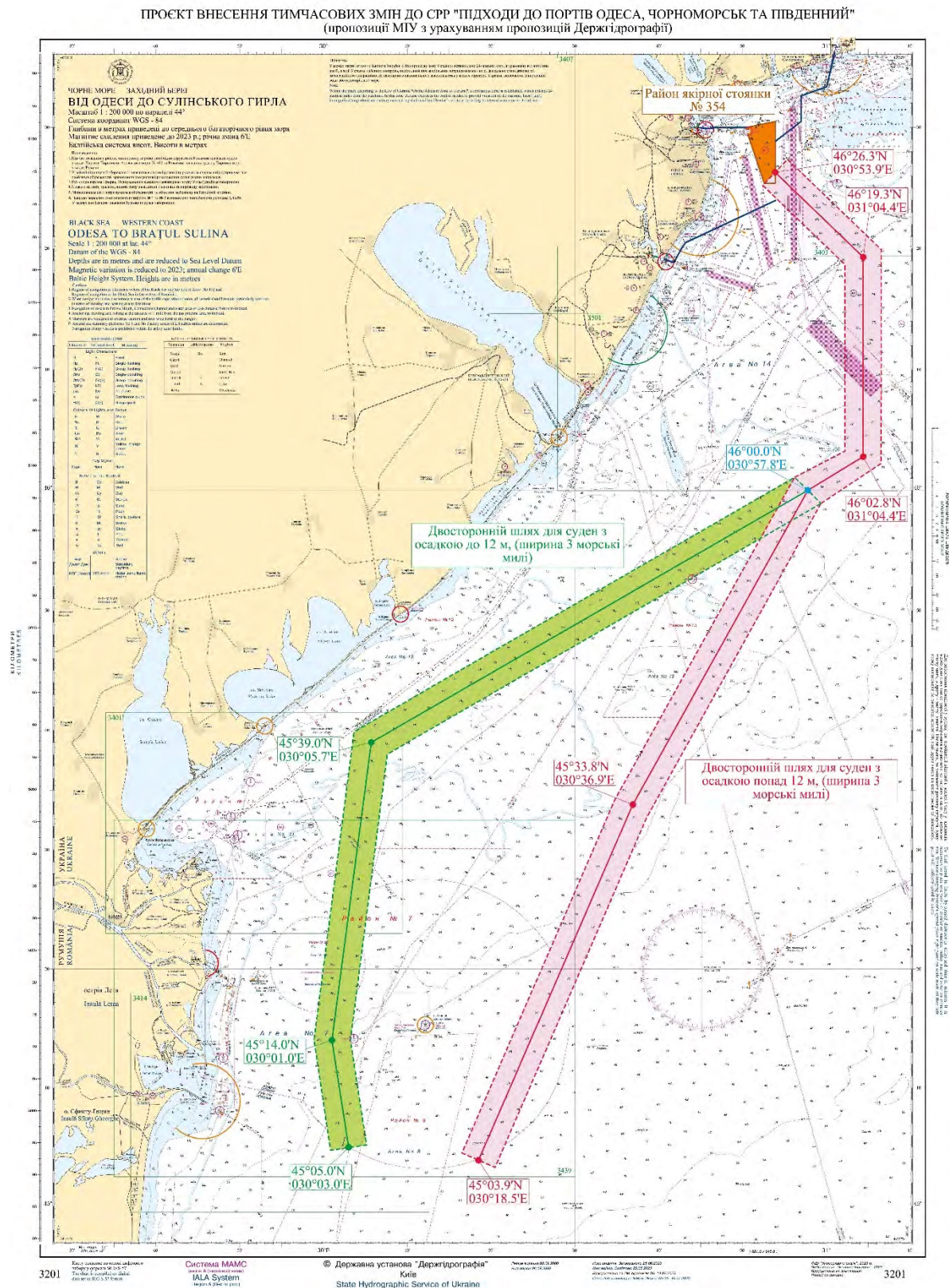
Risk Intelligence (Illustration for visual guidance only)

NAVAREA III: See above for visual guidance on mined areas according to the Spanish flag administration (NAVAREA III 0092).

Mined areas are most likely a combination of deeper sea mines and shallow water mines for anti-amphibious operations as well as on beaches. Mines in the sea are most likely cabled or anchored and under control.

Please also note that active NAVAREA III warnings include a warning of possible drifting mines (NAVAREA III 0122) for Northwest, West, and Southwest areas of the Black Sea.

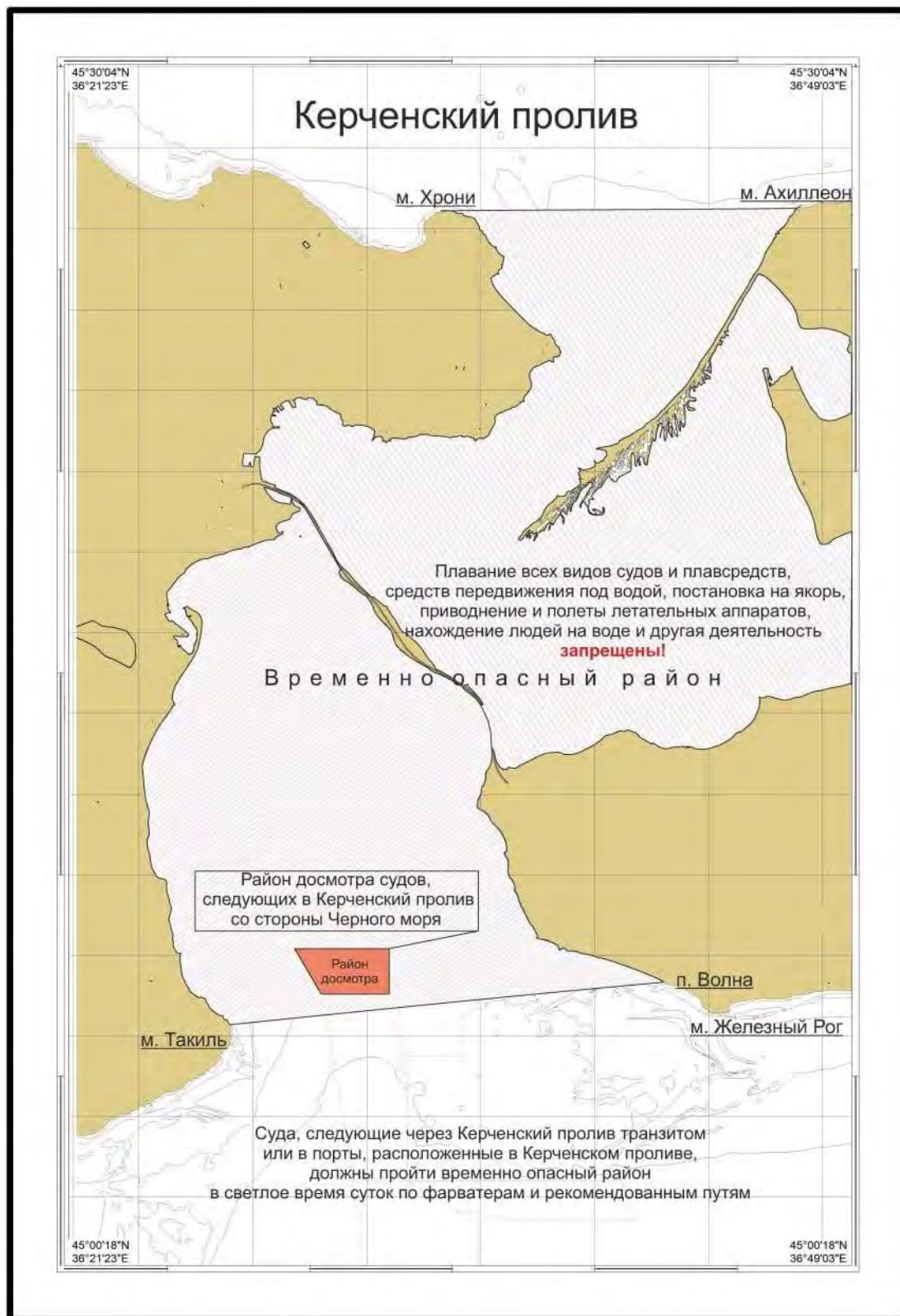
Annex 2:



The above chart shows the announced temporary routes for civilian vessels to and from Ukrainian Black Sea ports. The Ukrainian Navy emphasizes that war risks, including mines, remain. Further details can be found in the IMO Circular Letter No.4748 (Source: IMO Illustration for visual guidance only)

Annex 3:

Reported Kerch Strait inspection area, as announced by the Russian authorities 02 August 2023.



Annex 4:

Black Sea commercial vessel incidents: Latest 10

Date	Name of ship	Type	Flag
01 MAR 2025	SUPER SARKAS	Bulk carrier	Siera Leone
01 MAR 2025	MSC LEVANTE F	Container ship	Panama
14 OCT 2024	NS MOON	Civilian vessel	Belize
	OPTIMA	General cargo vessel	Palau
09 OCT 2024	SHUI SPIRIT	Container ship	Panama
07 OCT 2024	OPTIMA	General cargo vessel	Palau
05 OCT 2024	PARESA	General cargo vessel	St. Kitts and Nevis
20 SEP 2024	GOLDEN LION	General cargo vessel	Antigua and Barbuda
11 SEP 2024	AYA	Bulk carrier	St. Kitts and Nevis
22 AUG 2024	CONRO TRADER	Railroad ferry	Russia
16 AUG 2024	N/A	Ferry	Russia

Container ship MSC LEVANTE F damaged during missile strike

March 1 2025



Region: Europe

The Panama-flagged container ship MSC LEVANTE F was damaged during a missile strike at the port of Odesa, Ukraine at 17:47 LT (14:47 UTC) on 01 March 2025.

The incident took place at: 46:29.18N 30:44.53E.

According to multiple reports the vessel suffered unspecified damage during a ballistic missile attack that targeted the port, also causing damage to port infrastructure. There are no indications that members of the crew were injured, however, two port employees reportedly suffered injuries.

The 13,634 DWT vessel is under the technical management of MSC Shipmanagement Limited, Limassol, Cyprus.

Bulk carrier SUPER SARKAS damaged during missile strike

March 1 2025



Region: Europe

The Sierra Leone-flagged bulk carrier SUPER SARKAS was damaged during a missile strike at the port of Odesa, Ukraine at 17:47 LT (14:47 UTC) on 01 March 2025.

The incident took place at: 46:29.18N 30:44.53E.

According to multiple reports the vessel suffered unspecified damage during a ballistic missile attack that targeted the port, also causing damage to port infrastructure. There are no indications that members of the crew were injured, however, two port employees reportedly suffered injuries.

The 28,495 DWT vessel is under the technical management of Thor Shipping and Trading Limited, Istanbul, Turkiye.

Odesa port damaged during ballistic missile strike

March 1 2025



Region: Europe

Infrastructure at the port of Odesa, Ukraine was damaged during a ballistic missile strike at 17:47 LT (14:47 UTC) on 01 March 2025.

The incident took place at: 46:29.18N 30:44.53E.

According to multiple reports the port was targeted by a ballistic missile attack that caused unspecified damage to the port's infrastructure. Two port employees reportedly suffered injuries requiring hospitalisation. The vessels SUPER SARKAS and MSC LEVANTE F reportedly also suffered damage as a result of the attack, although there were no reports of injuries to their respective crew.

Chornomorsk port facility struck in drone attack

February 28 2025



Region: Europe

A facility related to the Port of Chornomors, Ukraine, suffered damage in a drone attack at an unknown time on 28 February 2025.

According to local sources the attack caused one fatality and one wounded and some material damage as well.