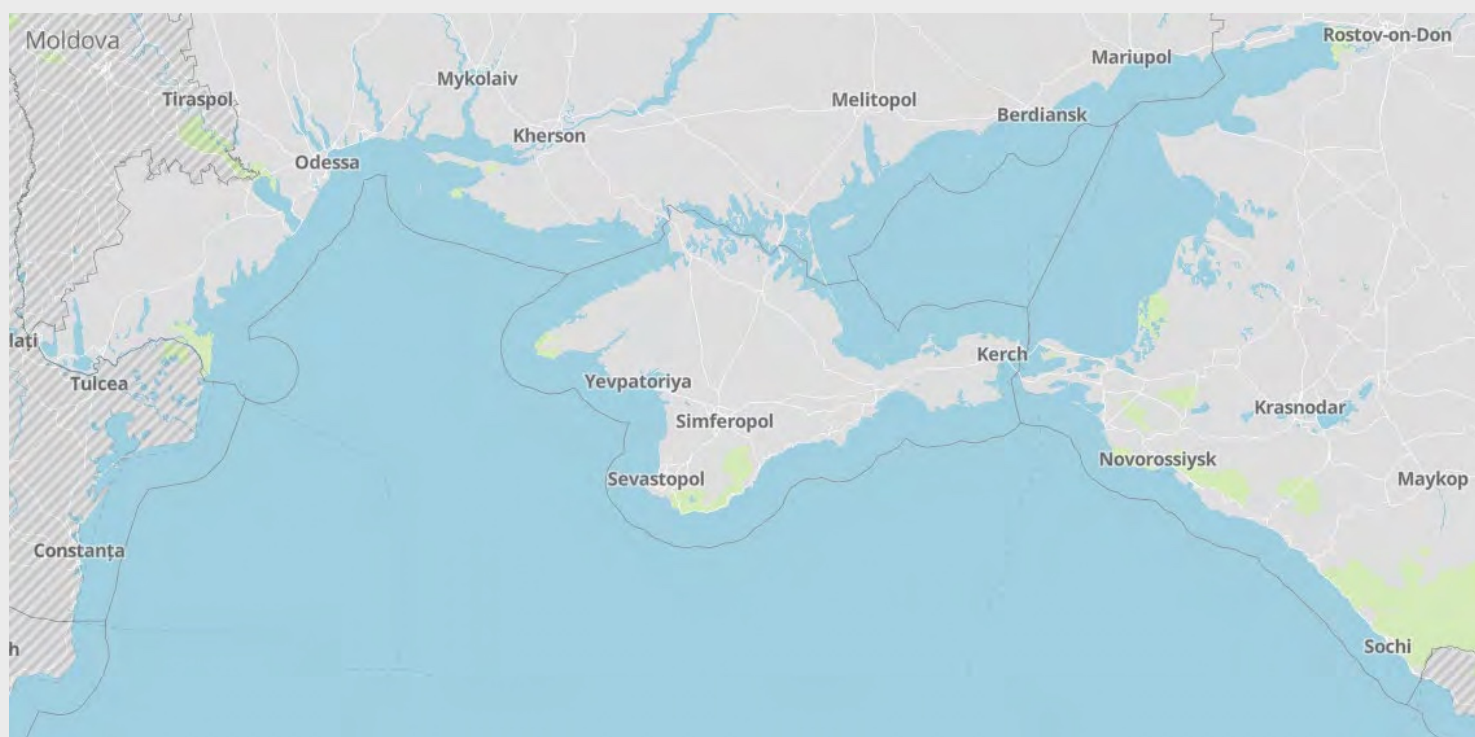


# Northern Black Sea and Russia (Ports and Terminals): Weekly Intelligence Report

Date and time of latest intelligence included in this report: 10 April 2025 - 09:00 UTC



## RiskIntelligence

Risk Intelligence A/S  
Strandvejen 100  
2900 Hellerup  
Denmark

Tel: +45 7026 6230  
[riskintelligence.eu](http://riskintelligence.eu)

# Overview of current situation

## Brief update:

Developments during the reporting period have not resulted in a change in the threat landscape of the Black Sea. The ports table details the operational and security conditions in the ports.

The past week has not presented any further clarity regarding previous statements of a reportedly agreed ceasefire in the Black Sea and the parallel approach of bilateral negotiations between the US and Russia and the US and Ukraine, has not, so far, resulted in any real ceasefire being settled and remains unlikely to be agreed to in the coming week.

Other notable developments during the past week have mainly focussed on military operations along the frontline with Russian forces making some incremental advances into Ukraine and Ukrainian forces withstanding the Russian efforts to retake the territory in Russia, currently held by Ukrainian forces. This is likely to continue under present circumstances.

It therefore remains likely that Russian forces will continue to attack Ukrainian civilian infrastructure including ports and Ukrainian forces likely to continue to counterattack, to the degree they remain able – until or if some form of ceasefire agreement is reached. It is also worth stressing that if a ceasefire is agreed, this would not necessarily result in complete cessation of hostilities, and some ongoing military action should not be ruled out – although the degree to which such actions occur should be diminished, all depending on the details of the agreed ceasefire, or similar.

Future targeted attacks towards vessels cannot be ruled out, but the threat of collateral damage as part of attacks towards Ukrainian port infrastructure remain the most likely.

---

The current likely scenarios for vessel attacks are:

**Scenario 1:** Vessels can be targeted due to flawed intelligence from the Russian military, suggesting they carry military hardware.

**Scenario 2:** Attacks may be aimed at deterring vessels from using the Ukrainian transit corridor and disrupting maritime exports by creating uncertainty and danger.

**Scenario 3:** Russia could target vessels to increase pressure on Ukraine to influence future negotiations. Regardless of Russian objectives, Ukrainian ports and their infrastructure remain likely targets. The threat of collateral damage to vessels in port and those transiting the corridor is high due to Russia's apparent willingness to target cargo vessels and port infrastructure near civilian areas.

## Ukrainian Black Sea Corridor:

Vessels continue navigating the corridor to the open Ukrainian Black Sea ports, during the past week. As past incidents have indicated the threat level for vessels in transit is assessed as lower than the likelihood of collateral damage in port, given the continued focus of Russian attacks on Ukrainian port cities and port infrastructure and future incidents involving commercial vessels—whether from collateral damage, debris, missile misidentification, or potential direct targeting—cannot be ruled out. The Ukrainian Black Sea corridor and ports operate under IMO Circular Letter 4748 and local guidance, though operational differences should be expected.

Operational disruptions such as power outages and air raid alarms are likely, until security improves. An elevated threat to maritime trade in the NW Black Sea and near the conflict area persists due to likely Russian actions against vessels and port infrastructure.

## Black Sea:

Reported war-related developments do not change the threat perception for the Black Sea region, with the north-western area still an active war zone.

The security situation varies within the Black Sea, with lower threats to maritime operations in the southern half. Potential harassment, AIS/GPS signal jamming or spoofing, and the use of warning shots remain possible. Ukrainian forces are expected to continue pressuring Russian forces in the Black Sea, including Crimea, in order to achieve greater control over the maritime domain to secure future shipping corridors to Ukrainian ports. Russia, despite reduced naval capabilities in the Black Sea and the Sea of Azov, maintains a presence that can deploy mines or munitions into the Black Sea. Submarine deployment will be influenced by Ukrainian anti-ship capabilities. However, under current conditions, Russia is unlikely to enforce any blockade or inspection regime in the north-western Black Sea.

The threat of sea mines persists in the wider Black Sea, with ongoing Mine Countermeasure (MCM) operations conducted by Romania, Bulgaria, Turkey, and Ukraine. Reports of Russian and Ukrainian military activity includes operations in the Black Sea, underlining the continued threats posed to shipping in the area. War-related implications, such as varying degrees of naval presence, congestion at regional straits and ports, sanctions on trade to and from Russia, and complications with crew changes, have become more common since Russia's withdrawal from the UN-backed Black Sea Grain Initiative in July 2023.

### **Sea of Azov:**

The Sea of Azov is largely restricted for commercial traffic without Russian consent. Mariupol and Berdyansk ports, controlled by Russian forces, have unclear operational statuses. Reports indicate stolen Ukrainian cargo is being transported from these ports. Ukraine monitors vessels to occupied ports in the Sea of Azov and may consider them potential military targets. Russia has increased defences around the Crimea bridge due to Ukrainian strikes. Non-Russian-flagged vessels face disruptions in the Kerch Strait, and Russia may prohibit vessels loaded outside its territory from transiting. Attacks on Russian Black Sea ports operating at ISPS level 2 are probable.

### **Ukraine:**

Power-outages and air-raid alarms continue throughout the country, as a result of Russian attacks, which can also disrupt port operations. Concerns regarding the operational future of the country's energy network, including sufficient supplies and making the network more resilient to aerial attacks, continue to be expressed. Given the constant unpredictability, future disruption should be expected.

Diplomatic efforts and focus by both the United States and European nations continue to look for any possible solutions to ending the Russian war in Ukraine – albeit at a slower pace than previously. However, until any form of a ceasefire is agreed and enforced, it remains likely that Russia may use any pretext for future attacks on Black Sea maritime operations, if deemed useful to achieve their military or political objectives.

Martial law remains in place – with some local night-time curfews in place. All Ukrainian ports are operating at ISPS level 3 following the communication to the IMO by the Ukrainian authorities.

### **Russia:**

Port information is located in the port table.

Some uncertainty on the ceasefire is rooted in the Russian demand for access to the SWIFT payment system for some Russian banks. According to Russia, the reported agreed ceasefire will not begin until the sanctions on the banks are lifted.

With lacking implementation of the ceasefire, Ukraine is likely still planning strikes on Russian military targets like Novorossiysk Naval base, naval vessels, as well as targeting energy infrastructure and other port facilities related to energy exports. However, to show good faith and willingness, not just towards Russia but also the US, it is possible that Ukraine will refrain from any attacks in the Black Sea.

In case of any attacks, Ukraine is unlikely to directly target civilian infrastructure or vessel traffic, but collateral damage in the form of missile debris or similar is possible.

Overall, a Ukrainian attack against Russian maritime targets, predominately in Crimea, near Kerch and in the Eastern Black Sea remain a possibility.

Videos of naval and aerial drone attacks in Russian ports also highlights a general lack of advanced counter measures. Russian anti-air is often fired at near horizontal angles. Therefore, a lot of anti-air fire is going directly into civilian and port areas, across from wherever Russian Naval vessels are positioned. This is likely to lead to damage to port facilities and vessels and may potentially also wound or kill sailors or port workers.

When using other Russian ports than those in the Black Sea, for example Arctic or Baltic Sea ports, it is possible that Russian authorities will try to recruit or coerce crews on visiting vessels with non-Russian flag or crew, to conduct sabotage of undersea cables by releasing the anchor and dragging it across cables or pipelines. Such cases of recruitment have not been confirmed, but it is possible given the ongoing Russian effort to conduct sabotage of undersea cables in the Baltic Sea, and the requirement for plausible deniability.

### **Conflict outlook:**

There have been few updates on the ongoing efforts and any progress or developments regarding possible ceasefire agreements, including in the Black Sea, between US and Russia and the US and Ukraine, indicating that either the pace of negotiations is slowing, or being devoted less attention, by the US administration. But whether or not this is due to obstacles in the process or a wider issue of having reached some form of dead end, in the current US approach regarding resolving the war in Ukraine, is unclear. Therefore, under current circumstances Russia seems unlikely to agree to enforce a ceasefire without its own demands being met and it therefore remains likely that attacks towards Ukrainian infrastructure, including port facilities, which may also result in collateral damage to vessels, or in some cases the direct targeting of vessels, will continue - until any form of a ceasefire is agreed and enforced. This is assumed on the basis of that Russia believe it has the upper hand on the battlefield and able to obtain their objectives with their current

momentum. It is also probable that they believe they can obtain additional concessions from both the US and Ukraine, by being unrelenting on their maximalist demands for ending the war in Ukraine. Their demands include the lifting of sanctions, notably to aid their own exports through the Black Sea, no NATO membership for Ukraine, no foreign troops in Ukraine and international recognition of Crimea, and likely also the other annexed territories, as being part of Russia.

Developments along the frontline do not change the threat assessment in the northwestern Black Sea. Both Ukraine and Russia are likely capable of continuing the conflict at present or near-present levels without significant escalation.

New sanctions on Russia could alter Black Sea security dynamics, with potential restrictions on EU, NATO, or Western-affiliated vessels accessing Russian ports. Detention and harassment of such vessels by Russian authorities are possible.

The war has shown potential for broader hybrid warfare, with Western intelligence warning of increased Russian activities in Europe. Ukraine is also likely to continue to target Russian infrastructure beyond the Black Sea. Examples include "parcel bombs" at DHL sites and incidents involving Nord Stream pipelines, suggesting hybrid warfare extending beyond Ukraine and the Black Sea to areas with high tensions between Russia and the West or NATO.

**Annex 1 – Illustration of reported mined areas**

**Annex 2 – Announced temporary corridor from UKR Black Sea ports**

**Annex 3 – Reported Kerch Strait inspection area**

**Annex 4 – List of commercial vessel incidents**

**Annex 5 – Incidents**

## Ukraine and northern Black Sea ports

Refer to the following page for definitions and information on sanctions/commercial restrictions

Port	Current port situation	Current local situation	Operations	Security
<b>Odessa</b>	The port is understood operational in accordance with the IMO Circular Letter 4748, and local guidance.	Russian strikes do occur against targets in the Odesa Oblast, including some direct targeting of Odesa city and port facilities. The overall security situation remains highly unpredictable and local operational differences and issues should be expected. Disruptions to operations may occur due to power outages or air raid alarms.		
<b>Pivdenny</b>	The port is understood operational in accordance with the IMO Circular Letter 4748, and local guidance.	Russian strikes have occurred against targets in and near Pivdenny, including targeting of the port. Future targeting in the area as part of military operations cannot be ruled out. The overall security situation remains highly unpredictable and local operational differences and issues should be expected. Disruptions to operations may occur due to power outages or air raid alarms.		
<b>Mykolaiv</b>	Closed. Cargo operations suspended for commercial operations.	In control of Ukrainian forces. Russian strikes against military targets and critical-infrastructure targets in or near the city do occur.		
<b>Mariupol</b>	Disputed operational status.	Controlled by Russian forces and part of annexed territory. Actual operational status is disputed with Russian authorities reporting the port to be open, although this is with very limited traffic prioritized by the Russian state. Reports indicate the rebuilding of the port facilities by Russian military and contractors.		
<b>Chornomorsk</b>	The port is understood operational in accordance with the IMO Circular Letter 4748, and local guidance.	Russian strikes have occurred against targets in the Odessa Oblast. Future attacks targeting Chornomorsk port cannot be ruled out. The overall security situation remains highly unpredictable and local operational differences and issues should be expected. Disruptions to operations may occur due to power outages or air raid alarms.		
<b>Ukraine Danube ports</b>	Ukraine Danube ports are operating and handling ship calls via the Danube, and the Sulina and Bystre Canals.	Incidents involving mines have previously occurred in the Black Sea near the canals. Russian strikes against the ports in the Izmail region, do occur. Local weather conditions, water levels, and pilot shortages also impact maritime operations. ISPS Level 3 is in place, as communicated by the Ukrainian authorities. Delays and congestion have been reported in relation to port and canal operations.		

Port	Current port situation	Current local situation	Operations	Security
<b>Kerch Strait</b>	Open for navigation but only for authorized transit. Ports located within the Strait are reported to be operating.  Inspection regime and additional security measures are in place.	UKR naval drone or missile strikes against the Kerch Strait Bridge and nearby naval stations and critical infrastructure are expected. Attacks are not expected to directly target commercial maritime traffic, but collateral damage cannot be ruled out. Russian defensive fire against drones may hit commercial traffic.  Russia has announced transit restriction of vessels which are not loaded in Russian ports. Scrutiny against crew is possible *. See Annex 3 for reported Kerch Strait inspection area.		
<b>Russian Black Sea ports</b>	Open with restrictions. Additional security measures are in place.	Ports operating at ISPS level 2, some operational delays possible. Ukrainian attacks against naval or state-affiliated vessels, and port infrastructure, using naval drones, aerial drones, or cruise missiles, is possible. Collateral damage from drones may occur in case of incidents, and Russian defensive fire against drones may hit commercial traffic. Scrutiny against crew is possible *.		
<b>Russian Sea of Azov ports</b>	Open with restrictions. Sea of Azov is currently closed to unauthorized navigation by the Russian authorities. Additional security measures are in place.	Ports operating at ISPS level 2, some operational delays possible. Ukrainian attacks against naval or state-affiliated vessels, and port infrastructure, using naval drones, aerial drones or cruise missiles, is possible. Collateral damage from drones may occur in case of incidents, and Russian defensive fire against drones may hit commercial traffic. Scrutiny against crew is possible *.		
<b>Temporary corridor from UKR Black Sea ports</b>	Operational status is reported to be open, in accordance with IMO Circular Letter 4748 – though likely influenced by local operational circumstances in the NW Black Sea.	The corridor is reported to be running without considerable issues, although disruption following attacks are to be expected. Any tacit agreement from Russia on current transits are unknown, and further Russian acceptance is unclear if the increased tempo of Ukrainian strikes on Russian assets in the Black Sea continues. Military activity in and near the corridor is possible, collateral damage to vessels is possible.		
<b>Constanta</b>	Open.	Operating, with additional cargo diverted to Constanta due to closed Ukrainian ports. Congestion should be expected, and although this is being managed, it could lead to delays.		

\* Constraints and demands related to vessels with Ukrainian crewmembers. Russian crew with previous military service may be questioned by authorities withheld as part of Russian mobilization efforts. \*\* Risk Intelligence is not responsible for third-party content.

# Operations and Security definitions

## Operations:

**Green** – Operations in the area are ongoing normally with no significant issues.

**Yellow** – Some delays or disruptions in the area may be expected, which could be due to limitations to, for example, port operations and/or congestion in the area, or other difficulties with access or operating at the required ISPS level or complying with other procedures either at port or offshore.

**Red** – Operations have been significantly disrupted and ports or areas might be closed or only partially operating due to restrictions, blockades, lack of functioning infrastructure, personnel disruptions, and access concerns, or other issues preventing all or most operations.

## Security:

**Green** – The area is secure and there are no direct or indirect security threats in the port vicinity or offshore area. Low threat to vessels/personnel.

**Yellow** – There are no direct security threats but there are possible indirect threats in the vicinity, particularly but not limited to conflict taking place in proximity either on land or offshore. Moderate threat to vessels/personnel.

**Red** – Direct threats are possible to the port or area and/or its immediate approaches, including collateral damage in the immediate area or direct attacks that could target infrastructure and vessels at berth/anchorages/underway. High threat to vessels/personnel.

## Note on sanctions and commercial restrictions

Sanctions and commercial restrictions are being imposed on Russia in response to its invasion. These sanctions are evolving and will affect ongoing business operations in many complex legal ways. Sanctions are being applied to individual Russians, business entities, and to certain Russian export products (such as oil products). There are also restrictions on specific nationalities (such as US citizens) engaging in certain activities, restrictions on payments (in certain currencies and through certain institutions), and restrictions on Russia's import of particular dual-use items and technologies. Port entry bans for Russian vessels are being implemented (in the UK, for example).

The fine print of sanctions and restrictions might affect chartering arrangements in unexpected ways, depending on the connection to Russia. These issues, as well as insurance issues for operating in war risk areas, are not covered in this report and might need to be assessed separately to reduce the risk of exposure.

*Advice given and recommendations made do not constitute a warranty of future results by Risk Intelligence or an assurance against risk. Recommendations made are based on information available at the time of writing. No express or implied warranty is given in respect of any judgment made or to changes or any unforeseen escalation of any factors affecting any such judgement.*

*Documents are for the benefit of the recipient only and may not be disclosed to any third parties without the prior written consent of Risk Intelligence; such consent not to be withheld unreasonably. The recipient agrees to indemnify Risk Intelligence against any claims and any resulting damages that may be caused by any unauthorised disclosure of such documents.*

# Annex 1:

## Reported mined areas



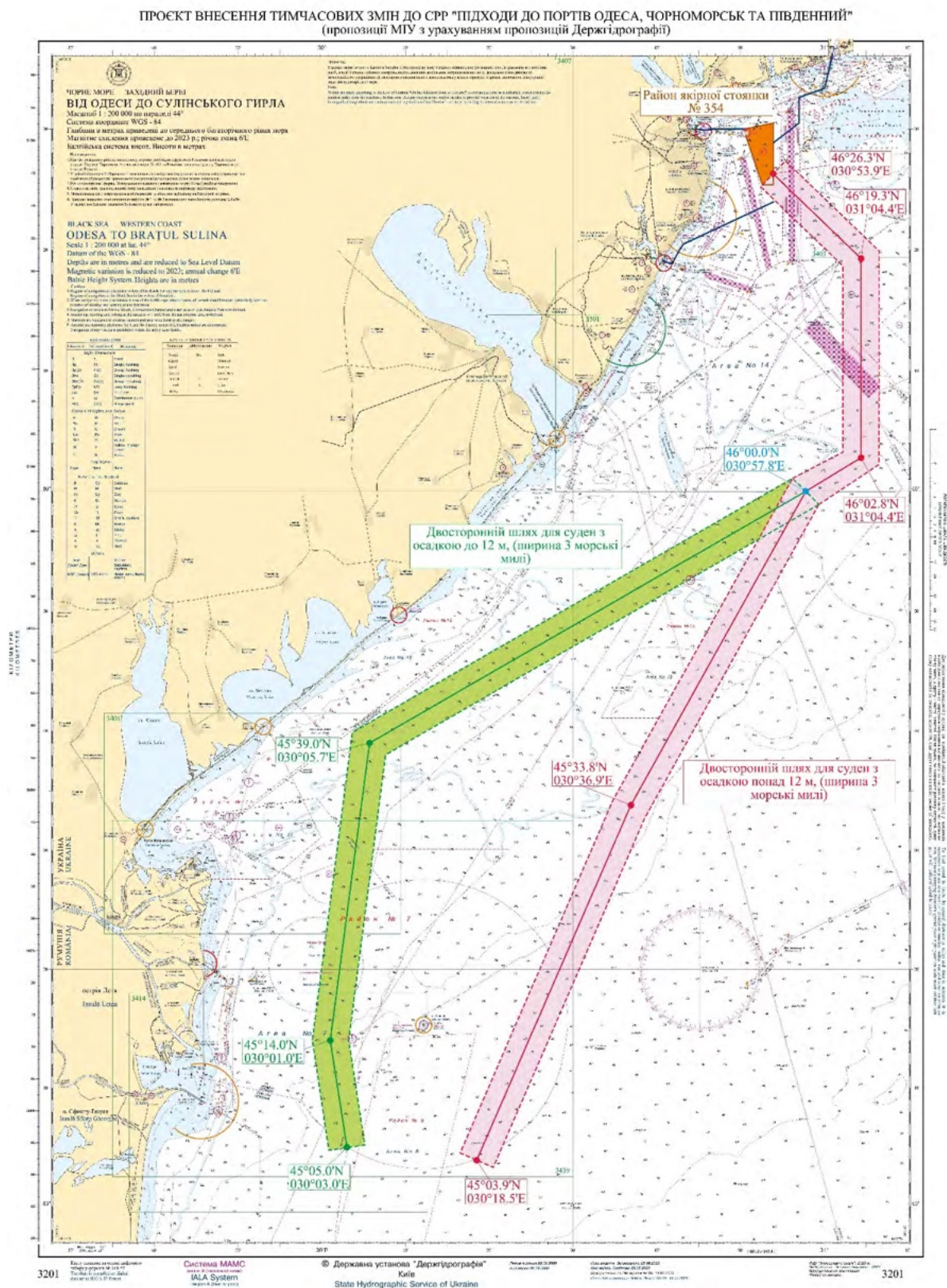
*Risk Intelligence (Illustration for visual guidance only)*

NAVAREA III: See above for visual guidance on mined areas according to the Spanish flag administration (NAVAREA III 0092).

Mined areas are most likely a combination of deeper sea mines and shallow water mines for anti-amphibious operations as well as on beaches. Mines in the sea are most likely cabled or anchored and under control.

Please also note that active NAVAREA III warnings include a warning of possible drifting mines (NAVAREA III 0122) for Northwest, West, and Southwest areas of the Black Sea.

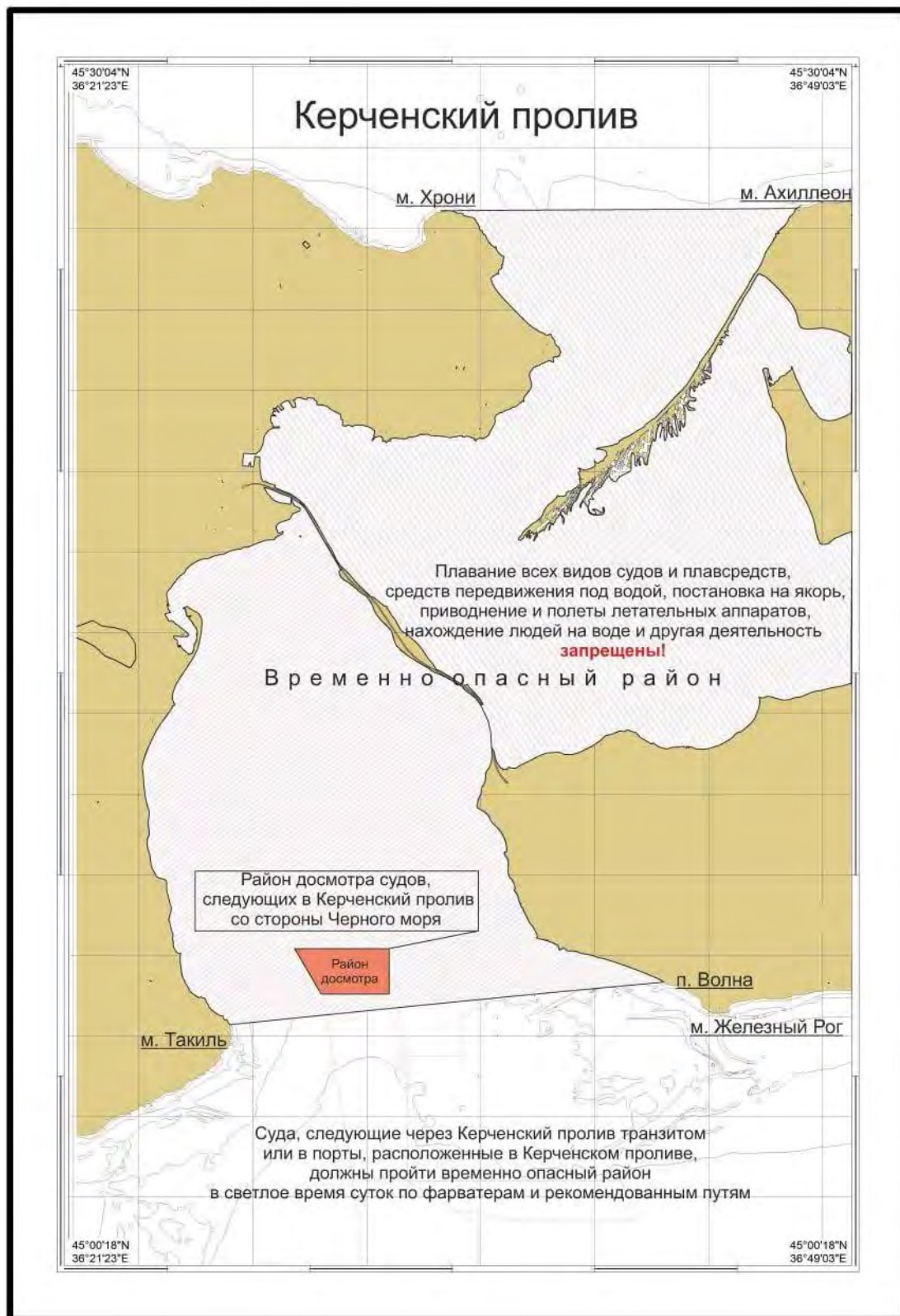
## Annex 2:



The above chart shows the announced temporary routes for civilian vessels to and from Ukrainian Black Sea ports. The Ukrainian Navy emphasizes that war risks, including mines, remain. Further details can be found in the IMO Circular Letter No.4748 (Source: IMO Illustration for visual guidance only)

## Annex 3:

Reported Kerch Strait inspection area, as announced by the Russian authorities 02 August 2023.



## Annex 4:

Black Sea commercial vessel incidents: Latest 10

Date	Name of ship	Type	Flag
11 MAR 2025	MJ PINAR	Bulk carrier	Barbados
01 MAR 2025	SUPER SARKAS	Bulk carrier	Siera Leone
01 MAR 2025	MSC LEVANTE F	Container ship	Panama
14 OCT 2024	NS MOON	Civilian vessel	Belize
14 OCT 2024	OPTIMA	General cargo vessel	Palau
09 OCT 2024	SHUI SPIRIT	Container ship	Panama
07 OCT 2024	OPTIMA	General cargo vessel	Palau
05 OCT 2024	PARESA	General cargo vessel	St. Kitts and Nevis
20 SEP 2024	GOLDEN LION	General cargo vessel	Antigua and Barbuda
11 SEP 2024	AYA	Bulk carrier	St. Kitts and Nevis

## Annex 5:

No maritime related incidents recorded during the past week.